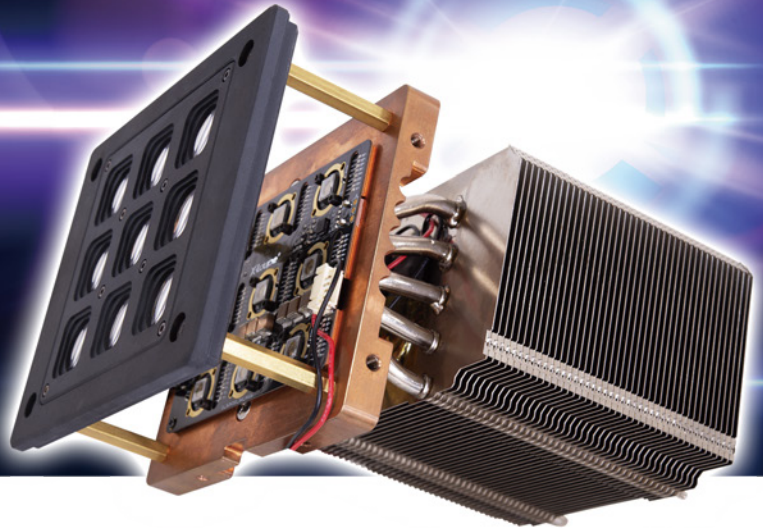


IR Light Engine **FA-3x3 IR**

NIR search light engine for
km-distance covert surveillance
at night



Reliable non-moving parts

Fixed angle illumination

Solid-state laser SMD

Sub-zero Options available

Recommend to pair with low-light surveillance camera with IR filter On / Off switch.
Capable of illuminating targets up to 2 km away.

Caution : Enclosure with thermal management is necessary for outdoor environments.

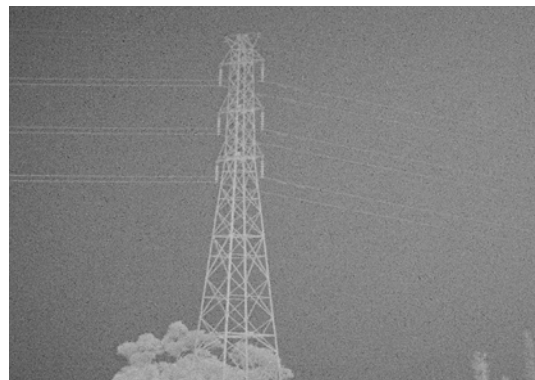
Warning : DO NOT direct light to human eyes in short distances.

IR searchlight / off



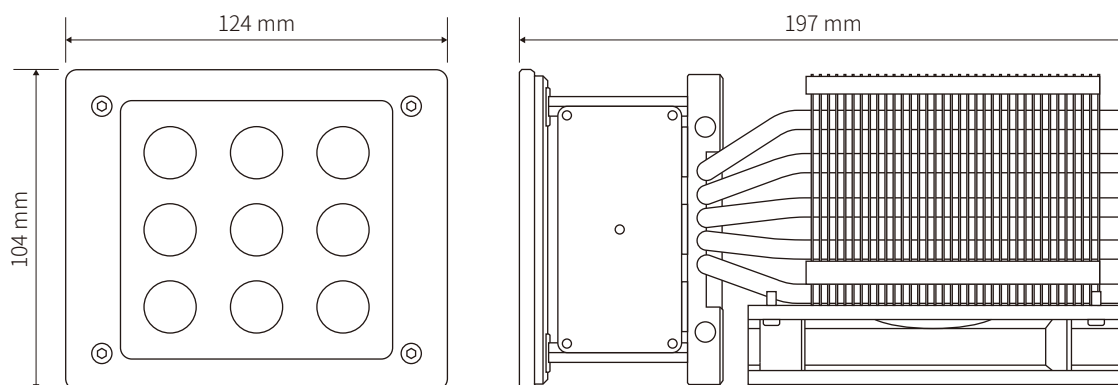
▲ No light source: coarse image particles, lots of noise, low contrast.

IR searchlight / on



▲ With IR light source: image is clear and high contrast.

*Dimension



X-Loupe Light Engine Specification		
	FA-3x3IR	FA-3x3IRMk2
Power Output (Electric, watt)	Max 90w (10w x9)	Max 120.6w (13.4w x9)
Optical / Electric Conversion %	Max 40%	
Laser Cells	9 (3x3 matrix)	
Lens Diameter	18mm	
Beam Projection Angle (Degree)	2.6°	
Cooling	Air	
Dimension* (LxWxH)	197mm x 124mm x 104mm	
Weight	2.25 kg	
Storage Temperature	-40~+85℃	
Operating Temperature	0~55℃	0~50℃
Command & Driver Module		
DC Input Range	12~19VDC	
Power Supply		
Input AC Voltage	110~230VAC	
Input Current Max.	1.8A	2.4A
Output DC Voltage	12VDC	12VDC
Output Current Max.	13.5A	18.8A
Recommended Power Supply	MEANWELL RSP-320-12	
Recommended IP67 Power Supply	MEANWELL HLG320H-12	

★We (Lumos Tech.) reserves the right to change the product appearance or specification. The contents of catalogs/ manuals are subject to change without prior notice.

Distributor



7th floor, No.8, Wanhe St., Wenshan District,
11653 Taipei City, Taiwan, R.O.C.
TEL:886-2-2230-1168 FAX:886-2-2239-2112
e-mail:contact@lumos.com.tw
www.x-loupe.com

D FA-3x3IR
060424



Lumos Technology Co. Ltd.